

The background is a large, abstract painting. It features a large, golden-yellow silhouette of a person's head in profile, facing right. Inside the silhouette, a city skyline is visible. Below the silhouette, three people are depicted in a dark, textured environment. One person is sitting on a ledge, looking up at the golden silhouette, while two others are standing behind them. The overall color palette is dominated by golden-yellow, black, and grey tones.

UNext's Targeted Learner Persona-specific AI Training Program

How We Implemented
A Focused, Distinctive
Program For A Global
Tech Consultant



Overview

AI implementation is systematic. It's a meticulously strategized initiative that works best when implemented holistically.

At UNext, our AI Academy accomplishes this.

Established to empower enterprises pioneering breakthroughs of tomorrow, our AI Personas Training Program develops niche skills across your workforce through multiple, parallel focused tracks.

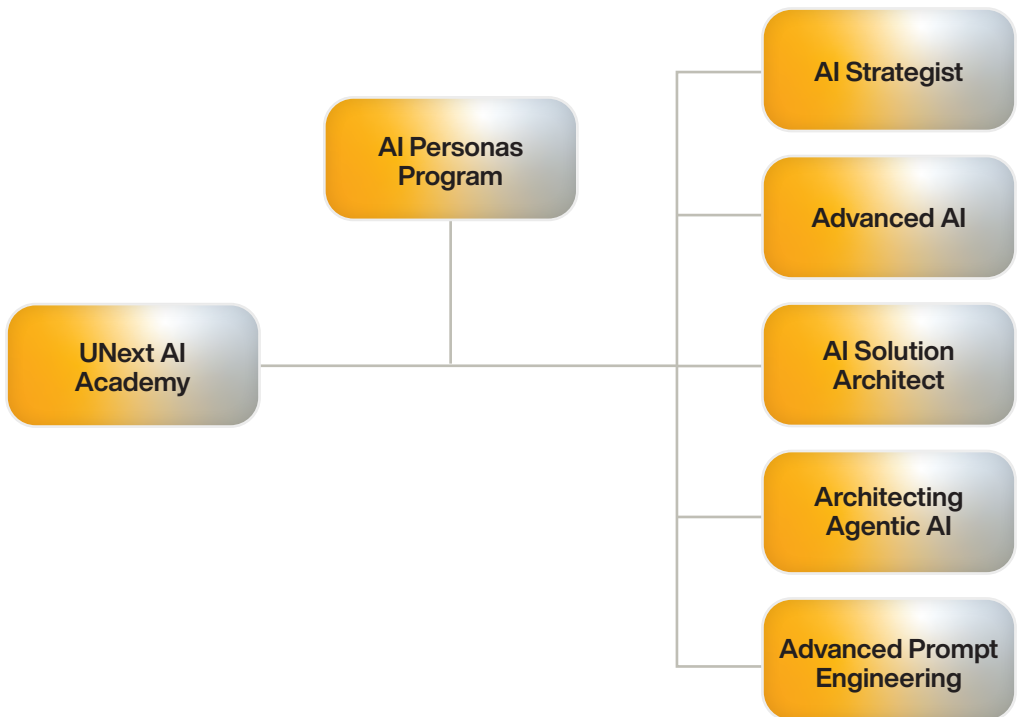
One consulting mammoth and longtime client wanted to transform its professionals into a future-ready workforce. The enterprise aimed at implementing AI programs across distinct segments of its teams and ensure a collective skill upgrade.

This case study documents the entire journey of a sophisticated AI training program deployed for the organization, shedding light on the different profiles and their respective approach to designing an outcome-driven curriculum and pedagogy.

Strategizing Diverse Personas For A High-impact AI Training Program

Training a niche cohort of learners is very different from implementing a holistic workforce development program. While AI training is the all-encompassing goal, refined sets of ambitions, journeys, and outcomes exist in each bubble.

To complement the partnering enterprise's vision, we decided to break down our program approach into multiple AI personas.



About The Program

The objective of this program was to equip participants with foundational and strategic knowledge about AI projects, emphasizing enterprise strategy, people management, and key AI roles. It included interactive sessions to explore real-world applications, team dynamics, and essential components for executing AI strategies effectively.

Learner Profile

Professionals managing AI projects, who need to understand AI project lifecycles, stakeholder management, and technical details such as prompt engineering to enhance model effectiveness.

Learning Outcomes

Participants gained a strategic understanding of how AI can drive business transformation by exploring core AI concepts, change management practices, and governance frameworks.

Through real-world use cases, they learned how to scope AI projects, align AI strategy with business goals, and manage culture and talent shifts.

The program enabled leaders to confidently oversee AI initiatives, ensuring ethical, scalable, and value-driven implementations.

These professionals helped stakeholders scope and prioritize use cases, understand outputs, and deliver training and change management.

About The Program

An intensive Advanced AI training program, this was designed for professionals with foundational AI knowledge and data scientists focusing on advanced machine learning techniques.

The program covers a wide range of topics starting with the fundamentals of deep learning and neural networks, including an introduction to Keras and TensorFlow, and progresses to advanced deep learning and Natural Language Processing (NLP) techniques.

It also covers Graph Neural Networks (GNNs) and their practical applications. The program aims to provide a deep understanding of the Generative AI landscape, prompt engineering fundamentals, and practical applications in real-world scenarios.



Learner Profile

- Professionals with foundational AI knowledge aiming to master complex neural networks and cutting-edge technologies
- Data Scientists engaged in data-driven projects, applying advanced machine learning techniques in areas such as anomaly detection and NLP

Learning Outcomes

- Learners built a strong foundation in deep learning and neural network architectures.
- They gained hands-on experience with Keras and TensorFlow for model development.
- Participants explored advanced techniques including attention mechanisms, RNNs, and encoder-decoder models.
- The course emphasized practical skills in model training, optimization, and evaluation.



About The Program

A niche program, we aimed at equipping professionals and data scientists with advanced expertise in AI through an intensive training program. The course was designed to strengthen their understanding of deep learning, NLP, and graph neural networks using industry-standard tools like Keras and TensorFlow. Participants will gain practical skills in applying Generative AI and prompt engineering. Real-world case studies ensure hands-on experience. By the end, learners will be prepared to implement cutting-edge AI solutions effectively.

Learner Profile

Professionals seeking to deepen their expertise in Generative AI, machine learning, and deep learning, with a focus on practical applications, ethical deployment, and effective management of AI solutions.

Learning Outcomes

- This training program built a strong foundation in machine learning, covering supervised, unsupervised, and deep learning models with appropriate evaluation metrics.
- Participants gained hands-on experience in building and deploying ML pipelines using tools like scikit-learn, TensorFlow, and MLflow.
- It introduced key NLP techniques and real-world use cases such as sentiment analysis and entity recognition.
- The program emphasized data pipeline orchestration, AI governance, and scalable data management using tools like Airflow and Spark.
- It also featured MLOps practices and a capstone project to apply end-to-end AI workflows in a business context.



Architecting Agentic AI



About The Program

This program emphasized foundational concepts and hands-on experience in building intelligent agents using frameworks like CrewAI, LangGraph, and LangChain. The curriculum was designed for participants to explore advanced architectures, integrate open-source tools, and deploy agents across cloud platforms with multi-agent orchestration and fine-tuned LLMs.

Learner Profile

Participants with a minimum work experience of 2 years and above, who were aware of traditional AI & ML concepts

Learning Outcomes

- This program introduced the fundamentals of AI agents, covering their core components, evolution, and basic implementation using Python.
- Participants gained hands-on experience with leading AI agent frameworks like CrewAI and LangGraph, exploring their architectures and use cases.
- The training delved into advanced agent architectures using tools like Ollama, Groq, and Hugging Face, including the conversion of rule-based agents to LLM-based agents.
- The program featured real-world use cases such as RAG implementation, agent-to-agent interaction, and ethical considerations were explored.
- The curriculum also incorporated modules on cloud-based agents, fine-tuning LLMs, and orchestrating multi-agent systems using platforms like AWS.



Advanced Prompt Engineering

About The Program

This two-day intensive program on Advanced Prompt Engineering was crafted to equip participants with hands-on expertise in crafting effective prompts for a range of NLP tasks using Generative AI.

The scope of the program revolved around learners gaining deep insights into prompt optimization, retrieval-augmented generation techniques, and evaluation strategies using LLM-based feedback loops.

Designed for all professionals, the program balances conceptual depth with practical labs using tools like Azure OpenAI and Google Colab.

Learner Profile

This program was designed for professionals across the non-technical spectrum.



Learning Outcomes

- This program introduced Generative AI concepts, business use cases, and the LLM ecosystem, including hands-on experience accessing LLMs via Azure and OpenAI.
- Participants learned foundational and advanced prompt engineering techniques, including few-shot prompting, Chain-of-Thought, and ReAct patterns.
- The course explored API integration, multi-task prompting, and Retrieval-Augmented Generation (RAG) with evaluation methods and real-world applications.
- It concluded with an end-to-end project to build a document-based chatbot using RAG and Streamlit.

The Result

The program was a resounding success with every distinct workforce persona receiving a very specific, experiential AI training program. Our detailed learner profiling allowed us to transform the program journey into a completely bespoke learning experience, which is now translating into tangible results as well.

Following the outcomes and recognitions of the program, we are currently strategizing another program for the giant on a distinct futuristic technology.

About UNext

UNext is India's leading online learning and talent transformation company. We provide a full stack tech platform for universities and colleges to offer online courses and degree programs. Our focus is to bring online higher education to a rising number of learners looking to level up in their careers. The online programs offered on our platform, through universities, are designed for re-skilling, up-skilling, and workforce development.

At UNext, we take pride in being one of the largest enterprise and workforce development companies in India. Our endeavor is to empower our learners, university partners and enterprise clients to achieve tangible outcomes and make a significant impact.

Headquartered in Bengaluru, India, UNext Learning is part of and backed by the Manipal Education and Medical Group (MEMG).

20,000+
Enterprise Programs
Delivered

6mn+
Hours Of Content
Consumed


7,00,000+
Learners Transformed
Globally

700+
Large Enterprise
Clients



Transform Your Workforce With Us

By tailoring programs for diverse domains and market segments across distinct functional roles, we offer the most practical and relevant workforce transformation programs in the market. Our program ecosystems are designed to seamlessly tackle massive volumes of simultaneous cohorts so you can precisely implement your workforce transformation goals.

A vertical bar on the left side of the contact information section, transitioning from dark brown at the top to light yellow at the bottom.

To deploy a similar program
in your enterprise and nurture
future-ready professionals,



+91 98869 88452



corporate.solutions@u-next.com